

## **SPR** Available with RMC (MIDI), FISHMAN and SCHERTLER

This is an intermediate model between our studio and professional instruments, based on the model SP designed by Amalia Ramírez in 2002, in which she introduced some improvements both in the quality and in the price. The ornamentation is different on the tie block, which in model SPR has the same mosaic of the rosette. The SPR guitar is partially built in Ramírez workshop, where it is carefully inspected, adjusted and certified once it is totally finished.



**Top:** Solid red cedar or Spruce  
**Sides and back:** Solid Indian rosewood  
**Scale:** 650 mm



[www.guitarrasramirez.com](http://www.guitarrasramirez.com)

*José Ramírez*<sup>®</sup>



**STUDIO GUITARS' BROCHURE**

## Classical guitars

**Line R** Available with RMC (MIDI), FISHMAN and SCHERTLER

**RA:** NEW!

**Top:** Solid red cedar or spruce

**Sides and back:** Laminated Indian rosewood

**Scale:** 650 or 636 mm

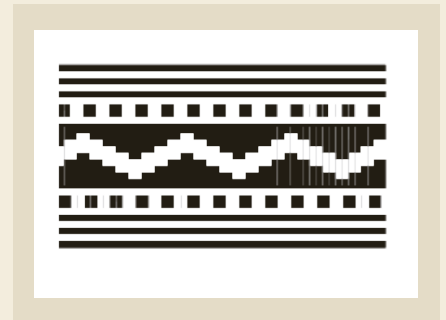
Simple construction.

**RB:** NEW!

**Top:** Solid red cedar or spruce

**Sides and back:** Solid Indian rosewood

**Scale:** 650 or 636 mm



## Classical guitars

**Line NE** Available with RMC (MIDI), FISHMAN and SCHERTLER

**1NE:** **Top:** Solid red cedar

**Sides and back:** Laminated Indian rosewood

**Scale:** 650 mm

**2NE:** **Top:** Solid red cedar

**Sides and back:** Solid Indian rosewood

**Scale:** 650 or 636 mm

**3NAE:** **Top:** Spruce

**Sides and back:** Solid Indian rosewood

**Scale:** 650 or 636 mm

**4NE:** **Top:** Solid red cedar

**Sides and back:** Solid Indian rosewood

**Scale:** 650 mm

Better construction



## Flamenco guitars

**FL** Available with RMC (MIDI), FISHMAN and SCHERTLER

**FL1A:** **Top:** Solid spruce  
**Sides and back:** Solid cypress  
**Scale:** 650 mm

**FL1C:** **Top:** Solid red cedar  
**Sides and back:** Solid cypress  
**Scale:** 650 mm

**FL2:** **Top:** Solid spruce  
**Sides and back:** Solid cypress  
**Scale:** 650 mm  
Better construction

**FL2N:** **Top:** Solid spruce  
**Sides and back:** Solid Indian rosewood  
**Scale:** 650 mm  
Better construction



## Cutaway guitars

**CWE** Available with RMC (MIDI), FISHMAN and SCHERTLER

**S1CWE:** **Top:** Solid spruce  
**Sides and back:** Laminated Mongoy  
**Scale:** 650 mm

**R1CWE:** **Top:** Solid red cedar  
**Sides and back:** Laminated African mahogany  
**Scale:** 650 mm

**2NCWE:** **Top:** Solid red cedar or spruce  
**Sides and back:** Laminated Indian rosewood  
**Scale:** 650 mm

**4NCWE:** **Top:** Solid red cedar or spruce  
**Sides and back:** Solid Indian rosewood  
**Scale:** 650 mm



## Classical guitars

**130 AÑOS** Available with RMC (MIDI), FISHMAN and SCHERTLER



This guitar is born to celebrate 130 years since José Ramírez I started this wonderful adventure building such a Spanish instrument. We've carried on generation by generation with the very same illusion of the first day.

**Top:** Solid red cedar or spruce

**Sides and back:** Solid Indian rosewood

**Scale:** 650 mm



## Classical guitars

**GH** Available with RMC (MIDI), FISHMAN and SCHERTLER



This model was designed by Amalia Ramírez to satisfy the wishes of many clients who wanted a re-issue of this legendary Ramírez guitar used by the Beatle George Harrison. High quality Ramírez studio guitar.

**Top:** Solid spruce

**Sides and back:** Solid Indian rosewood

**Scale:** 650 mm

